



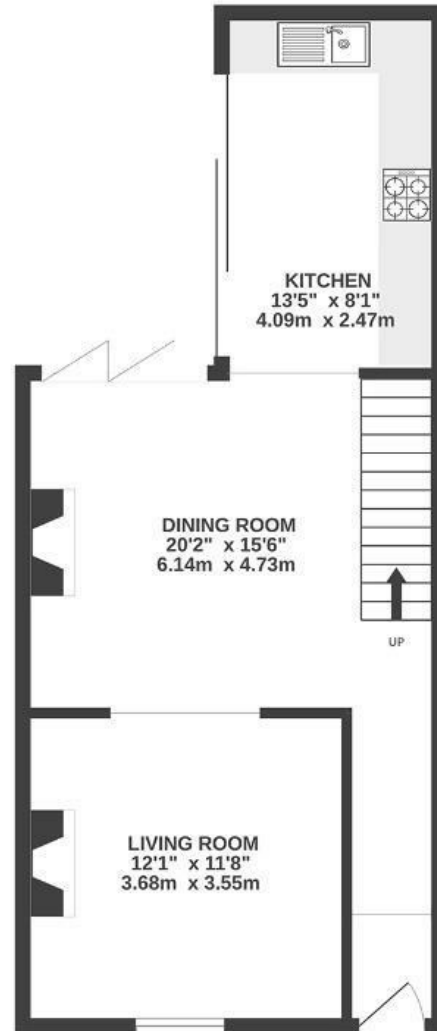
St. Werburgh's Park

ST. WERBURGH'S

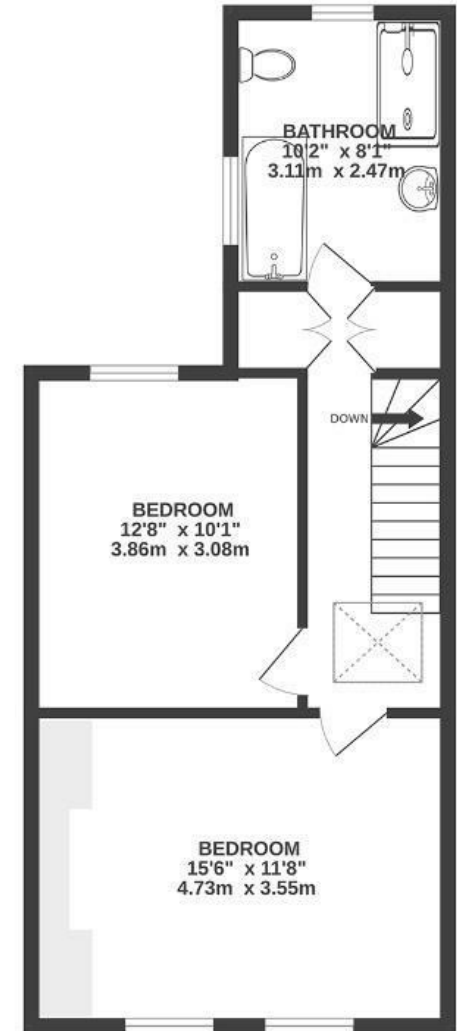
APPROXIMATE FLOOR AREA
89 SQM / 946 SQFT



GROUND FLOOR
473 sq.ft. (43.9 sq.m.) approx.



1ST FLOOR
486 sq.ft. (45.1 sq.m.) approx.



Boardwalk

St. Werburghs , BRISTOL



£500,000



2 Bedrooms



BS2 9YT



1 Bathrooms

One of my favourite things is waking up, reading in bed with a cup of tea as the morning sunlight streams through the windows. In the summer, the garden has been such a special place for us - sunny dinners with friends, evening drinks with my husband, and long meals around the table with the doors open downstairs. The open-plan living space has made it such an easy, generous home to host in. I've also always loved the little secret feeling of the back garden gate.

